

KODAK GEL LOGIC 2200 IMAGING SYSTEM

NEW DIRECTIONS IN IMAGING VERSATILITY

Let Kodak point the way to increased productivity and efficiency—beginning with chemiluminescence imaging capabilities.

The new KODAK Gel Logic 2200 Imaging System integrates a **higher-sensitivity**, 2.2 megapixel cooled CCD camera, our multi-purpose imaging cabinet, and leading-edge image management software— all at a highly economical price. Now, a single, affordable system lets you handle a broader spectrum of advanced imaging needs.



Gel Logic 2200 System with 2.2 megapixel cooled CCD camera and multi-purpose imaging cabinet

- Thermoelectrically cooled CCD camera
 - Versatile imaging and analysis of labels and samples including chemiluminescence, fluorescence, and chromogenic dyes
 - Cooled to -29°C in a constant closed-loop system that delivers low noise for high sensitivity
 - The $f1.2$ lens with larger aperture delivers high signal sensitivity when compared to other cameras in its price class
 - 2.2 megapixel sensor yields high-resolution images
 - 6x zoom lens allows imaging of fine details
- KODAK Gel Logic Cabinet
 - UV transillumination with UV shield for safe, simple visualization and excision of bands labeled with ethidium bromide and other fluorescent dyes
 - UV epi-illumination included at 370 nm (optional modules: 265 nm and 306 nm)
 - White light epi-illumination and transillumination allows visualization of samples stained with chromogenic labels
 - Discrete illumination mode selection features indicator light and optional timer for UV light operation
 - Large sample work area and door allow easy access
- KODAK Molecular Imaging Software
 - Molecular Imaging (MI) Software package optimizes GL 2200 System performance
 - Navigational structure features workflow-driven tool palettes for improved ease of use
 - Three-step lane and band analysis allows fast calculation of molecular weight, OD, and intensity measurements of proteins and nucleic acids
 - Image electrophoresis gels, blots, microplates, and colony plate assays
 - Annotate and prepare images for publication and generate economical hard-copy prints
 - Easily share or transmit image files over local and worldwide networks
 - Database feature allows searching and comparison of all images generated

SPECIFICATIONS	GEL LOGIC 2200	
CCD Camera	Cooling	Cooled to -29°C (closed loop)
	Sensor	1708 x 1280 pixels, interline CCD
	Lens	f1.2 lens, 6x zoom
Illumination	Fluorescence	UV transillumination (306 nm), UV epi-illumination, 370 nm (standard), 254 nm and 306 nm (optional)
	Visible	White light epi-illumination (standard) and converter screen for UV to white light transillumination
Chamber	Imaging area, maximum	28 x 21 cm
	Imaging area, minimum	4.7 x 3.5 cm
	Design	Integrated Illumination Cabinet
Optical Bandpass Filter	Included with system	590 nm WB50 (ethidium bromide, etc.) 535 nm WB50 (SYBR Green, etc.)
	Standard accessory	440 nm WB50, 570 nm WB50, 670 nm WB50
Computer Interface	FIREWIRE OS: WINDOWS 2000, WINDOWS XP, MACINTOSH OSX	
Performance	Resolution	28 micron/pixel at full zoom
	Dynamic range	>4 orders of magnitude
	Data acquisition	16-bit single capture, n-bit file accumulations
Detection Modes	Luminescence, Fluorescence, Absorbance	
Exposure Modes	Standard	0.05 seconds–100 minutes per exposure 32 accumulations max.
	Time lapse	0.05 seconds–100 minutes per exposure, 32 exposures
	Progressive	0.05 seconds–100 minutes per exposure, 32 exposures
Dimensions	Overall dimensions	42 x 55 x 89 cm; 16.4 x 21.5 x 35 in. (l x w x h)
	Weight	73 lbs
	Electrical configuration	120 VAC, 60Hz, 2A; 230 VAC, 50Hz, 2A
	Certifications	UL, CE, FCC Class A

Part of the family

The Gel Logic 2200 System extends the family of KODAK imaging systems, giving you an ever-growing array of options. The Gel Logic product line offers extreme value, allowing you to easily and economically upgrade your system with a new camera. For a complete listing of Gel Logic and other KODAK imaging systems, visit www.kodak.com/go/gellogic.

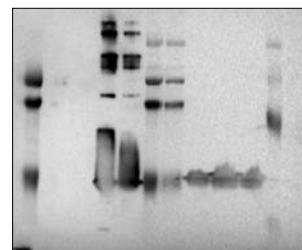
KODAK Gel Logic 2200 Imaging System

Includes Gel Logic 2200 image-capture hardware, Gel Logic 2200 camera assembly, Gel Logic camera controller, Gel Logic Integrated Illumination Cabinet (new rev), FIREWIRE cable, Gel Logic 2200 camera disk, 590 nm and 535 nm (55 mm) filters, Gel Logic 2200 User's Guide, 370 nm epi-illumination module, white epi-illumination pad, black epi-illumination pad, white light PADD, 120 V power cord or 230 V power cord (3), KODAK MI Software three-user package: standalone version (with KODAK Molecular Imaging Software CD (1), KODAK MI Software manual (3), copy protection device (USB) (3), and user registration card) OR network version (with KODAK MI Software CD network (1), KODAK MI Software manual (3), KODAK MI Software network manual, and user registration card)

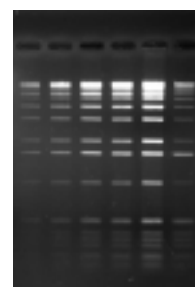
GL 2200, 120V	CAT No. 808 5870
GL 2200 Network Edition, 120V	CAT No. 157 8335
GL 2200, 230V	CAT No. 880 3991
GL 2200 Network Edition, 230V	CAT No. 163 8915

Find out more

For more information, or to place an order, call: 1-877-747-4357, exp. code 7
Outside the U.S.: +1-203-786-5657 Or visit us at: www.kodak.com/go/gellogic



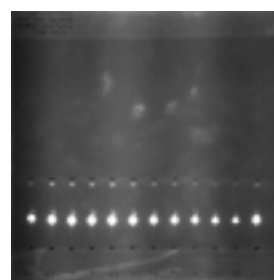
Chemiluminescence



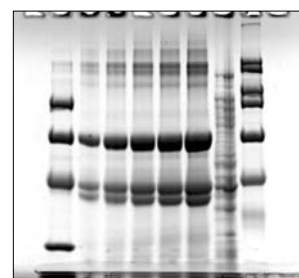
Gel documentation



Absorbance imaging



TLC plate imaging



Coomassie